



BLUE STAR

Packaged ACs & Ducted Splits



Nothing comes close to its cooling. Or its wide range.

With more than 7 decades of experience in air conditioning, over a million tons installed and over 200 trained and dedicated dealers across the country, Blue Star has been the undisputed market leader in ducted systems, in India.

Blue Star's leadership has not been limited to sales, service, reach and range alone. The Company has driven major technological innovations in the field, resulting in unique products being introduced into the market over the past decades.

Blue Star was the first to introduce scroll technology into ducted systems over a decade ago. Then came the HiSen and HiPer Packaged ACs which were designed to cater specifically to high sensible heat and high ambient applications such as IT parks and server banks. Blue Star also pioneered the HiPer Green Packaged unit to be used in green building applications.

Blue Star has a wide range of air cooled and water cooled floor/ceiling mounted ductable ACs with various refrigerant options to suit customer needs.



Salient features



Highly efficient units with scroll compressors



Robust and reliable



Designed to work effectively even in ambient temperatures as high as 50°C



Aesthetically superior



Compatible with R410A eco-friendly refrigerant



Service-friendly design

The Ducted Systems Range

Air Cooled Packaged ACs

Blue Star is a pioneer in the manufacturing of floor-mounted Packaged ACs for over three decades now. These systems are popular in commercial applications due to their distinct advantages of service-friendliness and extended ducting capabilities.

In this range, the floor-mounted indoor unit houses the DIDW blower, coil, filter and compressor, while the outdoor unit houses the high-efficiency condenser and new-design propeller fan. The strategic design, which places the compressors in the proximity of the evaporator in the indoor unit, further enhances the efficiency of this system.



Water Cooled Packaged ACs

Where water is available in plenty, Blue Star's Water-cooled Packaged ACs offer higher efficiency than air cooled systems since water is a superior cooling medium compared to air. These systems come pre-charged and the unit comprises of the filter, blower, evaporator, compressor and water cooled condenser. These water cooled systems offer both higher efficiency as well as lower power consumption compared to air cooled systems.





Air Cooled Ductable Splits

Where floor space is scarce but the AC unit can be housed above the false ceiling, ducted splits are the best choice. The indoor unit houses the evaporator, DIDW blower and filter in a compact powder-coated sheet metal unit, while the outdoor unit houses the compressor, the condenser and the new-design propeller fan.



Water Cooled Ductable Split Units

The water cooled ducted unit is another notable innovation from Blue Star. These units are perfectly suited for shopping malls, office complexes, service apartments, industrial airconditioning and any application with multiple tenants. The advantages of the water cooled unit are as follows:

- Independent control and billing is possible in multi-tenant premises.
- Units can be mounted within the tenant's place.
- Investment can be in phased manner, no need to lock capital.
- Aesthetically better as outdoor unit is not exposed unlike, in air cooled systems. Also refrigerant pipe limitation is taken care of as condensing unit need not be kept in open space and can be mounted near IDU within the building.
- New DSW-mini series units are available in smaller capacities: 1.5TR and 2TR



Product Line-Up


R3 Series

| Appearance | Tonnage (TR) | 4.3 | 6 | 9 | 12 | 18 | 24 |
|---|---|-----|---|---|----|----|----|
|  | Air Cooled Packaged Air Conditioners with R410A | | ● | ● | ● | ● | ● |
|  | Air Cooled Ducted Split Air Conditioners with R410A | ● | ● | ● | ● | ● | ● |

R1/R2 Series

| Appearance | Tonnage (TR) | 3 | 5.5 | 8.5 | 8.75 | 11 | 16.5 | 17 | 22 |
|---|---|---|-----|-----|------|----|------|----|----|
|  | Air Cooled Ducted Split Air Conditioners with R22 | ● | ● | ● | ● | ● | | ● | ● |
|  | Air Cooled Ducted Split Air Conditioners with R407C | ● | ● | ● | ● | ● | | ● | ● |
|  | Air Cooled Packaged Air Conditioners with R22 | | ● | | ● | ● | ● | | ● |
|  | Air Cooled Packaged Air Conditioners with R407C | | ● | | ● | ● | ● | | ● |
|  | Water Cooled Ducted Split Air Conditioners with R22 | ● | ● | | ● | ● | | | |
|  | Water Cooled Ducted Split Air Conditioners with R407C | ● | ● | | ● | ● | | | |
|  | Water Cooled Packaged Air Conditioners with R22 | | ● | | | ● | ● | | |
|  | Water Cooled Packaged Air Conditioners with R407C | | ● | | | ● | ● | | |

DSW Mini - R1 Series

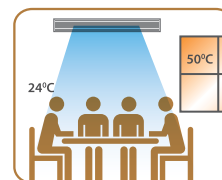
| Appearance | Tonnage (TR) | 1.5 | 2 |
|---|--|-----|---|
|  | Water Cooled Ducted Split Air Conditioners Mini Series-R22 | ● | ● |

Features



Operation at Higher Ambients

The condenser in this new series of ducted systems is designed to operate effectively at higher ambient temperatures, up to 50°C, ensuring efficient cooling even in the harsh summer months, without tripping.



Lower Running Cost

The high-efficiency fan used in these systems is specially designed with blades that offer better air flow. This, along with more coil face area, helps in reducing the condensing temperature, thereby lowering power consumption and running cost.



Service-friendly Design

The design of the outdoor unit in the ducted system range is such that it offers easy access to the compressors and the control panel on the side. And the fan motor assembly on the front panel is also easily removable for repair. The condenser coil is much easier to clean as well.



Scroll Compressor-driven

Due to their inherent design characteristics, scroll compressors have very high volumetric efficiency. They are ideal for air conditioning applications where the compression ratio is not very high. All Blue Star Packaged ACs and Ducted Splits use scroll compressors.



Intelligent Microprocessor Controller

All units are controlled by microprocessor-based controllers with the following features:

- Seven-segment LCD display
- Auto restart after power failure
- Fault display
- Run-time equalisation
- Non-volatile memory
- Touch-key on/off switch
- Single-phasing and phase reversal protection
- Time delay for compressor operation
- Accurate temp. control $\pm 1^\circ\text{C}$
- Provision for fire alarm input



Blue Fin Condenser and Corrosion-resistant Body

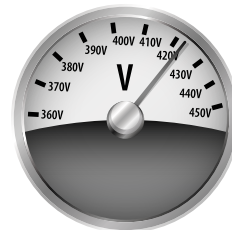
All units have special blue fins and are made of galvanised sheets, which are powder-coated after fabrication, making them corrosion-resistant while looking elegant, improving overall life of the system.





Wide Voltage Range of Operation

The ducted systems can function across a wide voltage range of 360 - 440 V, making them a rare breed.



Wide voltage range



Multi-compressor Advantage

Most of these ducted systems use more than one compressor. This gives them the advantage of high part-load efficiencies, since the entire evaporator surface is available to the system even during part-load conditions.



Run-time Equalisation

The intelligent controller ensures that all compressors (in multi-compressor units) run for equal number of hours, thus ensuring equal wear.



Lower Noise Levels

The outdoor units of these ducted systems are fitted with bird-wing design and high-efficiency fans. This lowers the noise levels significantly.



Hydrophilic Coating

The aluminium fins used on the evaporator coil have a hydrophilic coating. This coating helps retain the moisture on the fins from where they drain to the bottom by gravity. This helps reduce the moisture carry-over with the supply air.



DIDW Blower Design

These systems use advanced DIDW type centrifugal blowers with forward curved blades, which offer higher air throw.



Efficient Air Filters

Air filters made of non-woven polyester media enclosed in HDPE mesh are provided. These are efficient and can be cleaned easily.

Advantage Blue Star

Seven Decades of Experience

Over 7 decades of experience in the air conditioning field makes Blue Star the undisputed market leader in ducted systems.

State-of-the-art Production Facilities

Blue Star has 7 world-class manufacturing facilities across the country to produce various HVAC products starting from small room ACs to big Chillers. These factories are equipped with the latest automated machine tools and quality control systems, manned by experienced engineers. Blue Star also has an experienced R&D team to develop world-class products for its customers.

Cooling Solutions Made Easy

Blue Star's engineers offer optimal air conditioning solutions for various air conditioning needs of customers. The process starts from cooling load calculations to well designed air-distribution systems and equipment layouts before even embarking on a project.

Superior Project Management

Air conditioning of commercial spaces requires meticulous planning and timely execution as it involves coordination with architects, interior designers, consultants and various other professional agencies. Blue Star with its well trained dealers offers solutions for quality and timely execution of air conditioning projects for various applications.

After Sales Support

Blue Star provides after sales service through offices spread across 17 cities. There is also a network of well trained dealers across the country to take care of customers' service needs. The wide network and well trained service personnel ensure that customers enjoy their air conditioning without any interruption.



Air Cooled Ducted Split Air Conditioners - R1/R2 Series

| DESCRIPTION | UNITS | DSA361R1/R2 | DSA661R1/R2 | DSA1021R1/R2 | DSA1052R1/R2 | DSA1322R1/R2 | DSA1321R1/R2 | DSA2042R1/R2 | DSA2642R1/R2 |
|--------------------------|------------|--|----------------------------|--------------|--------------|--------------|--------------|---------------|---------------|
| Nominal Cooling Capacity | TR | 3.0 | 5.5 | 8.5 | 8.75 | 11.0 | 11.0 | 17.0 | 22.0 |
| | Btu/Hr | 36,000 | 66,000 | 102,000 | 105,000 | 132,000 | 132,000 | 204,000 | 264,000 |
| | kCal/Hr | 9,072 | 16,632 | 25,704 | 26,460 | 33,264 | 33,264 | 51,408 | 66,528 |
| Refrigerant | | R1 Series: R 22; R2 Series: R 407C | | | | | | | |
| Power Supply (AC) | | 380/420 V, 3 PH, 50 Hz | | | | | | | |
| External Finish | | Pure Polyester Powder Coated GI Steel Housing | | | | | | | |
| Indoor Unit | | | | | | | | | |
| Dimensions | WxDxH (mm) | 950x575x380 | 1175x635x460 | 1500x635x460 | 1500x635x460 | 1860x635x460 | 1860x635x460 | 2035x1085x550 | 2135x1215x690 |
| Power Supply (AC) | | 380/420 V, 3 PH, 50 Hz | | | | | | | |
| Type of Blower | | Centrifugal Forward Curved, Double Inlet, Double Width | | | | | | | |
| Nominal Air Flow | CMH | 2040 | 3740 | 5780 | 5950 | 7480 | 7480 | 11560 | 14960 |
| | CFM | 1200 | 2200 | 3400 | 3500 | 4400 | 4400 | 6800 | 8800 |
| Capacity Control | | 0,100% | 0,100% | 0,100% | 0, 50%,100% | 0, 50%,100% | 0,100% | 0, 50%,100% | 0, 50%,100% |
| Air Filter | | Non-woven Polyester Media Enclosed by HDPE Mesh | | | | | | | |
| Controller | | Microprocessor Based with LCD Display | | | | | | | |
| Outdoor Unit | | | | | | | | | |
| No of ODUs | Per Unit | 1 | 1 | 1 | 1 | 2 | 1 | 2 | 2 |
| Compressor Type | | Recip | Hermetically Sealed Scroll | | | | | | |
| No of Compressors/ODU | | 1 | 1 | 1 | 2 | 1 | 1 | 1 | 1 |
| Dimensions | WxDxH (mm) | 1020x420x690 | 1020x420x950 | 1190x550x950 | 1435x635x950 | 1020x420x935 | 1435x635x950 | 1190x550x950 | 1435x635x950 |
| Power Supply (AC) | | 415 V, Three Phase, 50 Hz | | | | | | | |
| Condenser Type | | Air-cooled FTHX | | | | | | | |
| Condenser Fan Type | | Propeller | | | | | | | |
| Indoor Unit Weight | kg | 50 | 55 | 85 | 85 | 105 | 105 | 150 | 210 |
| Outdoor Unit Weight | kg/ODU | 80 | 90 | 160 | 170 | 90 | 190 | 160 | 190 |

Air Cooled Packaged Air Conditioners - R1/R2 Series

| DESCRIPTION | UNITS | DPA661R1/R2 | DPA1052R1/R2 | DPA1322R1/R2 | DPA1321R1/R2 | DPA1983R1/R2 | DPA2642R1/R2 |
|--------------------------|------------|--|---------------|---------------|---------------|-----------------|---------------|
| Nominal Cooling Capacity | TR | 5.5 | 8.75 | 11.0 | 11.0 | 16.5 | 22.0 |
| | Btu/Hr | 66,000 | 105,000 | 132,000 | 132,000 | 198,000 | 264,000 |
| | kCal/Hr | 16,632 | 26,460 | 33,264 | 33,264 | 49,896 | 66,528 |
| Refrigerant | | R1 Series: R 22; R2 Series: R 407C | | | | | |
| Power Supply (AC) | | 380/420 V, 3 PH, 50 Hz | | | | | |
| External Finish | | Pure Polyester Powder Coated GI Steel Housing | | | | | |
| Indoor Unit | | | | | | | |
| Dimensions | WxDxH (mm) | 900x660x1700 | 1160x660x1700 | 1160x660x1700 | 1160x660x1700 | 1500x750x1750 | 1500x930x1950 |
| Type of Blower | | Centrifugal Forward Curved, Double Inlet, Double Width | | | | | |
| Nominal Air Flow | CMH | 3740 | 5950 | 7475 | 7475 | 11210 | 14950 |
| | CFM | 2200 | 3500 | 4400 | 4400 | 6600 | 8800 |
| Power Supply (AC) | | 415V, Three Phase, 50 Hz | | | | | |
| External Finish | | Pure Polyester Powder Coated GI Steel Housing | | | | | |
| Compressor Type | | Hermetically Sealed Scroll | | | | | |
| No of Compressors Unit | | 1 | 2 | 2 | 1 | 3 | 2 |
| Capacity Control | | 0,100% | 0, 50%,100% | 0, 50%,100% | 0,100% | 0, 33%,66%,100% | 0, 50%,100% |
| Air Filter | | Non-woven Polyester Midea Enclosed by HDPE Mesh | | | | | |
| Controller | | Microprocessor Based with LCD Display | | | | | |
| Outdoor Unit | | | | | | | |
| No of ODUs | Per Unit | 1 | 2 | 2 | 1 | 3 | 2 |
| Dimensions | WxDxH (mm) | 1020x420x950 | 1020x420x950 | 1020x420x950 | 1435x635x950 | 1020x420x950 | 1435x635x950 |
| Power Supply (AC) | | 230 V, Single Phase, 50 Hz | | | | | |
| Condenser Type | | Air-cooled FTHX | | | | | |
| Condenser Fan | Type | Propeller | | | | | |
| Indoor Unit Weight | kg | 195 | 250 | 270 | 260 | 430 | 500 |
| Outdoor Unit Weight | kg/ODU | 50 | 50 | 50 | 130 | 50 | 130 |

Air Cooled Packaged Air Conditioners - R3 Series

| DESCRIPTION | UNITS | DPA721R3 | DPA1081R3 | DPA1442R3 | DPA1441R3 | DPA2163R3 | DPA2882R3 |
|--------------------------|------------|--|--------------|---------------|---------------|------------------------------|---------------|
| Nominal Cooling Capacity | TR | 6.0 | 9.00 | 12.0 | 12.0 | 18.0 | 24.0 |
| | Btu/Hr | 72,000 | 108,000 | 144,000 | 144,000 | 216,000 | 288,000 |
| | kCal/Hr | 18,144 | 27,216 | 36,288 | 36,288 | 54,432 | 72,576 |
| Refrigerant | | R 410A | | | | | |
| Power Supply (AC) | | 380/420 V, 3 PH, 50 Hz | | | | | |
| External Finish | | Pure Polyester Powder Coated GI Steel Housing | | | | | |
| Indoor Unit | | | | | | | |
| Dimensions | WxDxH (mm) | 930x660x1700 | 930x660x1700 | 1260x760x1700 | 1260x760x1700 | 1500x835x1830 | 1500x930x1950 |
| Type of Blower | | Centrifugal Forward Curved, Double Inlet, Double Width | | | | | |
| Nominal Air Flow | CMH | 4080 | 6120 | 8155 | 8155 | 12230 | 16310 |
| | CFM | 2400 | 3600 | 4800 | 4800 | 7200 | 9600 |
| Power Supply (AC) | | 415V, Three Phase, 50 Hz | | | | | |
| Compressor Type | | Hermetically Sealed Scroll | | | | | |
| No of Compressors Unit | | 1 | 1 | 2 | 1 | 3 | 2 |
| Compressor Configuration | | Solo | Solo | Tandem | Solo | Tandem+Solo | Tandem |
| No of Circuits | | 1 | 1 | 1 | 1 | 2 | 1 |
| Capacity Control | | 0,100% | 0,100% | 0, 50%,100% | 0,100% | 0, 33%, 66%,100% | 0, 50%,100% |
| Air Filter | | Non-woven Polyester Media Enclosed by HDPE Mesh | | | | | |
| Controller | | Microprocessor Based with LCD Display | | | | | |
| Outdoor Unit | | | | | | | |
| No of ODUs | Per Unit | 1 | 1 | 1 | 1 | 2 (1x12TR + 1x6TR) | 2 |
| Dimensions | WxDxH (mm) | 1020x420x950 | 1190x550x950 | 1435x625x950 | 1435x625x950 | 1435x625x950 1020x420x950 | 1435x625x950 |
| Power Supply (AC) | | 230 V, Single Phase, 50 Hz | | | | | |
| Condenser Type | | Air-cooled FTHX | | | | | |
| Condenser Fan | Type | Propeller | | | | | |
| Indoor Unit Weight | kg | 200 | 250 | 300 | 300 | 500 | 580 |
| Outdoor Unit Weight | kg/ODU | 50 | 80 | 92 | 92 | 92 + 50 | 92 |

Air Cooled Ducted Split Air Conditioners -R3 Series

| DESCRIPTION | UNITS | DSA522R3 | DSA721R3 | DSA1081R3 | DSA1441R3 | DSA1442R3 | DSA2162R3 | DSA2882R3 |
|--------------------------|------------|--|---------------------------|--------------|--------------|--------------|---------------|---------------|
| Nominal Cooling Capacity | TR | 4.3 | 6.0 | 9.00 | 12.0 | 12.0 | 18.0 | 24.0 |
| | Btu/Hr | 51,000 | 72,000 | 1,08,000 | 1,44,000 | 1,44,000 | 2,16,000 | 2,88,000 |
| | Kcal/Hr | 13,000 | 18,144 | 27,216 | 36,288 | 36,288 | 54,432 | 72,576 |
| Refrigerant | | R 410A | | | | | | |
| Power Supply | | 230V, Single Phase, 50Hz, AC | 380/420 V, 3 Ph, 50Hz, AC | | | | | |
| External Finish | | Pure Polyester Powder Coated GI Steel Housing | | | | | | |
| Indoor Unit | | | | | | | | |
| Dimensions | WxDxH (mm) | 1245X730X310 | 1175X635X460 | 1500X635X460 | 1860X635X460 | 1860X635X460 | 2035X1085X550 | 2135X1215X690 |
| Power Supply | | 230V, Single 1 Ph, 50 Hz, ac supply | | | | | | |
| Type of Blower | | Centrifugal Forward Curved, Double Inlet, Double Width | | | | | | |
| Nominal Air Flow | CMH | 2700 | 3740 | 5780 | 7480 | 7480 | 11560 | 14940 |
| | CFM | 1600 | 2200 | 3400 | 4400 | 4400 | 6800 | 8800 |
| Capacity Control | | 0,50%,100% | 0, 100% | 0, 100% | 0, 100% | 0, 50%, 100% | 0, 50%, 100% | 0, 50%, 100% |
| Air Filter | | Non_woven Polyester Media Enclosed by HDPE Mesh | | | | | | |
| Controller | | Microprocessor Based with LCD Display | | | | | | |
| Out Door Unit | | | | | | | | |
| No of ODUs | Per Unit | 1 | 1 | 1 | 1 | 2 | 2 | 2 |
| Compressor Type | | Hermetically Sealed Scroll | | | | | | |
| No of Compressors/ODU | | 2 | 1 | 1 | 1 | 1 | 1 | 1 |
| Dimensions | WxDxH (mm) | 1020 X 420 X 950 | 1020x420x950 | 1190x550x950 | 1435x625x950 | 1020x420x950 | 1190x550x950 | 1435x625x950 |
| Power Supply | | 230V, Single Phase, 50Hz, AC | 380/420 V, 3 Ph, 50Hz, AC | | | | | |
| Condenser Type | | Aircooled FTHX | | | | | | |
| Condenser Fan Type | | Propeller Type | | | | | | |
| Indoor Unit Weight | kg | 56 | 55 | 85 | 105 | 105 | 150 | 210 |
| Out Door Unit weight | kg/ODU | 90 | 95 | 160 | 190 | 95 | 160 | 190 |

Water Cooled Packaged Air Conditioners - R1/R2 Series

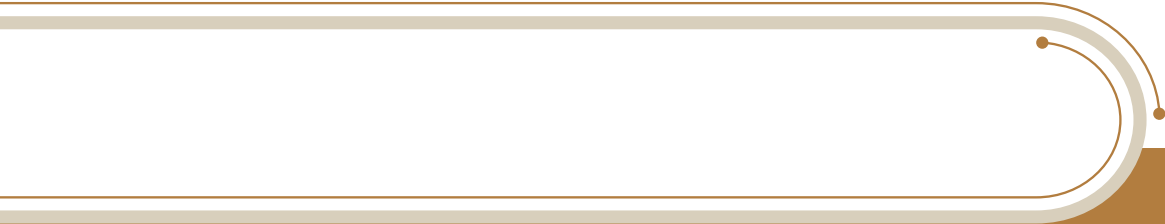
DSW Mini - R1 Series

| DESCRIPTION | UNITS | DPW661R1/R2 | DPW1322R1/R2 | DPW1983R1/R2 | DESCRIPTION | UNITS | DSW181R1 | DSW241R1 |
|-------------------------------------|------------|--|---------------|------------------|--|------------|--|----------|
| Nominal Cooling Capacity | TR | 5.5 | 11.00 | 16.5 | Nominal Cooling Capacity | TR | 1.5 | 2 |
| | Btu/Hr | 66,000 | 132,000 | 198,000 | | Btu/Hr | 18000 | 24000 |
| | Kcal/Hr | 16,632 | 33,264 | 49,896 | | kCal/Hr | 4536 | 6048 |
| Refrigerant | | R1 Series: R 22; R2 Series: R 407C | | | Refrigerant | | R-22 | |
| Dimensions | WxDxH (mm) | 900x660x1700 | 1160x660x1700 | 1500x750x1800 | Dimensions | WxDxH (mm) | 1160x675x550 | |
| Type of Blower | | Centrifugal Forward Curved, Double Inlet, Double Width | | | Type of Blower | | Centrifugal Forward Curved, Double Inlet, Double Width | |
| Nominal Air Flow | CMH | 3740 | 7475 | 11210 | Nominal Airflow | CMH | 890 | 1275 |
| | CFM | 2200 | 4400 | 6600 | | CFM | 525 | 750 |
| Cooling Coil | | Inner Grooved Copper Tubes with Al Slit Fins | | | Cooling Coil | | | |
| Electrical Power Supply | | 380/420V, Three Phase, 50 Hz, AC Supply | | | Electrical Power Supply | V/Ph/Hz | 230 V, 1 Ph, 50Hz, AC Supply | |
| External Finish | | Pure Polyester Powder coated GI steel housing | | | External Finish | | Pure Polyester Power Coated GI Steel Housing | |
| Capacity Control | | 0,100% | 0,50%, 100% | 0,33%, 66%, 100% | Air Filter | | Non-woven Polyester Media Enclosed in HDPE Mesh | |
| Air Filter | | Non-woven Polyester Media Enclosed by HDPE Mesh | | | Controller | | Microprocessor Based with LCD Display | |
| Controller | | Microprocessor Based with LCD Display | | | Compressor type | | Hermetically Sealed Scroll | |
| Compressor type | | Hermetically Sealed Scroll | | | Compressor Type | | Rotary | |
| No of compressors/Unit | | 1 | 2 | 3 | Condenser Type | | Shell & Tube | |
| Condenser Type | | Shell & Tube Type | | | Water Inlet and Outlet Sizes | mm | 25.4 BSP | |
| Cooling water required at 32 deg. C | USGPM | 20 | 40 | 60 | Cooling Water Flow Requirement (@32 ° C) | inch | 1 | |
| | CMH | 4.5 | 9.1 | 13.6 | | USGPM | 4.5 | 6 |
| Unit Weight | kg | 240 | 405 | 605 | Unit Weight | kg | 124 | 127 |

Water Cooled Ducted Split Air Conditioners - R1/R2 Series

| DESCRIPTION | UNITS | DSW361R1/R2 | DSW661R1/R2 | DSW1052R1/R2 | DSW1322R1/R2 |
|--------------------------------|------------|--|----------------------------|--------------|--------------|
| Nominal Cooling Capacity | TR | 3.0 | 5.5 | 8.75 | 11.0 |
| | Btu/Hr | 36,000 | 66,000 | 105,000 | 132,000 |
| | kCal/Hr | 9,072 | 16,632 | 26,460 | 33,264 |
| Refrigerant | | R1 Series: R 22; R2 Series: R 407C | | | |
| Power Supply (AC) | | 380/420 V, 3 PH, 50 Hz | | | |
| External Finish | | Pure Polyester Powder Coated GI Steel Housing | | | |
| Indoor Unit | | | | | |
| Dimensions | WxDxH (mm) | 950x575x380 | 1175x635x460 | 1500x635x460 | 1860x635x460 |
| Type of Blower | | Centrifugal Forward Curved, Double Inlet, Double Width | | | |
| Nominal Air Flow | CMH | 2040 | 3740 | 5950 | 7480 |
| | CFM | 1200 | 2200 | 3500 | 4400 |
| Power Supply (AC) | | 230 V, 1 Ph, 50 Hz | | | |
| Capacity Control | | 0,100% | 0,100% | 0, 50%,100% | 0, 50%,100% |
| Air Filter | | Non-woven Polyester Media Enclosed by HDPE Mesh | | | |
| Controller | | Microproessor Based with LCD Display | | | |
| Condensing Unit | | | | | |
| No of cds. units | per Unit | 1 | 1 | 1 | 1 |
| Compressor Type | | Recip | Hermetically sealed Scroll | | |
| No of Compressors/ Unit | | 1 | 1 | 2 | 2 |
| Dimensions | WxDxH (mm) | 800x655x545 | 800x655x545 | 1170x640x630 | 1170x640x630 |
| Power Supply (AC) | | 415 V, Three Phase, 50 Hz | | | |
| Condenser Type | | Water-cooled, Shell & Tube Type | | | |
| Cooling water required at 32°C | USGPM | 11 | 20 | 31 | 40 |
| | CMH | 2.5 | 4.5 | 7 | 9.1 |
| Indoor Unit Weight | kg | 50 | 55 | 85 | 110 |
| Outdoor Unit Weight | kg/ODU | 130 | 156 | 215 | 215 |

Specifications are subject to change due to continuous product development.





NOBODY COOLS BETTER™

For more information, please contact **BLUE STAR LIMITED • Ahmedabad:** 301 & 302, (3rd Floor), Abhishree Avenue, (Near) Nehru Circle, SM Road, Ambawadi, Ahmedabad - 380 015. Tel: (079) 40224000
Bengaluru: Anjuman KAY A R R Tower No - 28, Ward No 77, Mission Road, Bengaluru - 560027. Tel: (080) 41854000 • **Bhubaneshwar:** 3A, Satya Nagar, 2nd Floor, Bhubaneshwar - 751 007. Tel: (0674) 2572403 / 2573670 • **Chandigarh:** Adarsh Mall, 4th Floor, Plot No. 50, Industrial & Business Park, Phase - II, Chandigarh - 160 002. Tel: (0172) 5024000 • **Chennai:** KRM Plaza, No 2, Harrington Road, Chetpet, Chennai - 600 031. Tel: (91) (44) 42444000 • **Ghaziabad:** C 53A, Third Floor, Rajnagar District Center (RDC), Raj Nagar, Ghaziabad - 201001, Uttar Pradesh. Tel No: (0120) 2821400 • **Goa:** 210, 2nd Floor, Gera's Imperium I, Patto, Panjim, Goa - 403 001. Tel: (0832) 2438171/2437287 • **Gurgaon:** Vatika Atrium, 6th Floor, Golf Course Road, Sector 53, Gurugram - 122 002 (Haryana) Tel: (0124) 409 4000 • **Guwahati:** Oasis Plaza, Dr. B. Baruah Road, Ulubari, Kamrup, Guwahati - 781007. Tel: (0361) 2468496 • **Indore:** No. 502, Maloo-01, 26/C, Scheme No. 94/C Ring Road, Indore - 452 010 Tel: (0731) 4001211 / 4001311 • **Jaipur:** A-19, 1st Floor, Main Sahakar Path, Near Sahakar Bhavan, Jaipur - 302 001. Tel (0141) 2744033-35 • **Kochi:** 2nd Floor, Millennium Plaza, MKK Nair Road, Alinchuvadu Junction, Kochi - 682 024. Tel: (0484) 4499000 • **Kolkata:** 7, Hare Street, Kolkata - 700 001. Tel: (033) 22134100 • **Ludhiana:** SCO 16-17, Feroze Gandhi Market, Fortune Chambers, 3rd Floor, Ludhiana - 141001 (Punjab), Tel: 0161 5001404 • **Lucknow:** 177/4, Faizabad Road, Lucknow - 226 007. Tel: (0522) 4034000 • **Mumbai:** Blue Star House, 9-A, Ghatkopar Link Road, Saki Naka, Mumbai - 400 072. Tel: (022) 66684100 • **Nagpur:** 219, Bajaj Nagar, 1st Floor, South Ambazari Road, Nagpur - 440 010. Tel: (0712) 2249000 / 6624000 • **Pune:** 201/A, Nityanand Complex, 1st Floor, 247/A, Bund Garden Road, Pune - 411 001. Tel: (020) 41044000 / 26169332 • **Raipur:** Alaska Corporates, 3rd Floor, Opp. VIP Road, Jivan Vihar Colony, G E Road, Raipur, Chhattisgarh - 492 006. Tel: (0771) 6544000 • **Secunderabad:** Ashoka Raghupati Chambers, No 1-10-60 to 64, (4th Floor), S P Road, Begumpet, Hyderabad-500016 Telangana. Tel: (4044) 004000 • **Thiruvananthapuram:** TC IV/962, 'Chandrika', Sree Chitra Nagar, PipeLine Road, Kawdiar, Thiruvananthapuram - 695 003. Tel: (0471) 2720025 / 65 • **Vadodara:** Ramakrishna Chambers, 7th Floor, Productivity Road, Alkapuri, Vadodara - 390 007. Tel: (0265) 2330334 / 6614100 • **Visakhapatnam:** D. No. 49-24-65/1, Near Sankarmatam Road, Madhura Nagar, Visakhapatnam -530 016. Tel: (0891) 2748405 / 2748433 • **Vijayawada:** No. 40-1-62, Nagas Hafeez Plaza, Opposite to Grand Modern Super Market, Near BENZ Circle, MG Road, Vijayawada - 10 Tel: 0866 2484004
• email: coolingsolutions@bluestarindia.com • Visit us at: www.bluestarindia.com or SMS 'COOL' to 57575